



# MORNINGTON YACHT CLUB

FAMILY | FRIENDSHIP | SAILING

SPECIAL SAILING INSTRUCTIONS FOR DIVISIONS 1, 2 & 3  
ETCHELLS and FLYING FIFTEENS

## COMMONWEALTH BANK TWILIGHT PURSUIT RACE

### Mornington Yacht Club to Safety Beach Sailing Club

THURSDAY 21<sup>st</sup> FEBRUARY 2019

#### 1.0 GENERAL

The race shall be governed by the *Racing Rules of Sailing* (RRS), the Special Regulations of Australian Sailing (AS), the Mornington Yacht Club (MYC) Notice of Race (NoR) and Sailing Instructions (SI's) and these Special Sailing Instructions (SSI's).

#### 2.0 SAILING INSTRUCTIONS

The race shall be sailed under Part 3 ADDITIONAL SAILING INSTRUCTIONS FOR TOWER LIGHT STARTS & FIXED MARK COURSES of the MYC standard Sailing Instructions

#### 3.0 START TIME

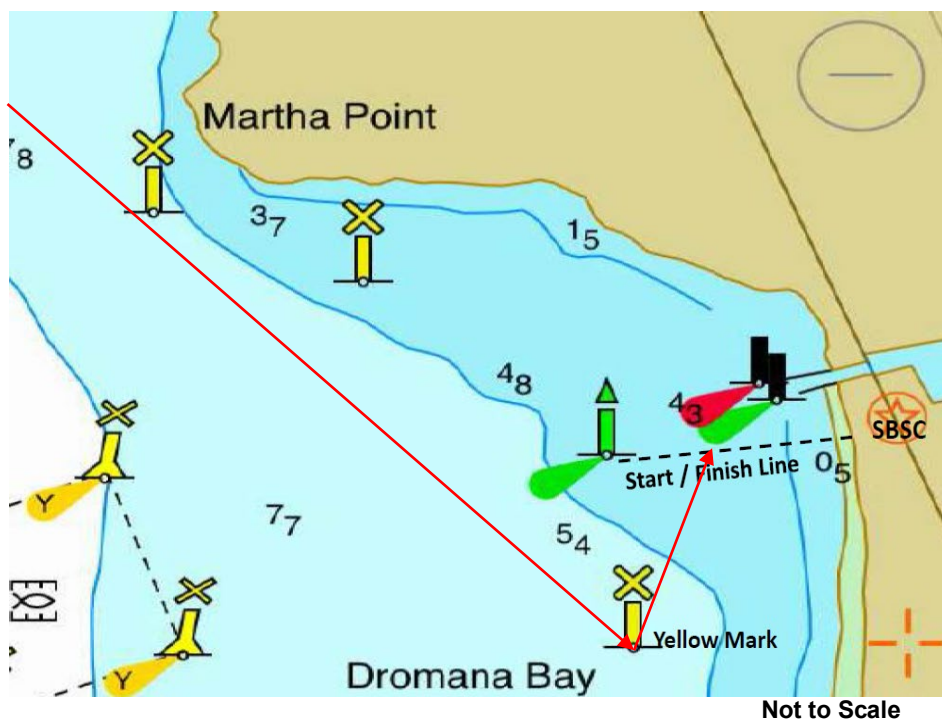
The Warning Signal shall be at 17:45hrs; boats scheduled to start after this time shall start at times listed on the Start Time Sheet published for this race and available at the Sign On desk at the Race Office.

#### 4.0 THE COURSE

Start at MYC to Mt Martha Marine Farm (pass either side) to Dromana Marine Farm (leave to Starboard) to a Yellow Pile (38° 18.613' S 144° 59.220' E) (leave to Port) to Finish at Safety Beach Sailing Club.

#### 5.0 THE FINISH

The Finishing Line shall be between the centre line of SBSC Starting Box on the Starboard end and the Green Pile (38° 18.374' S 144° 59.306' E) on the Port end. Boats having finished shall stay well clear of the finishing line so as not to disadvantage other competitors still racing.



Not to Scale

*Greg Martin*

Rear Commodore

14<sup>th</sup> February 2019